

[www.classicsteelltd.com](http://www.classicsteelltd.com)

*The Team to Build With*



**Classic Steel Limited**

A Complete Solution of Pre-Fabricated Steel Building





I am grateful to welcome you to the newest edition of our steel building catalogue. I hope the information inside will help you to understand about pre-engineered steel building and choose many available options to you from Classic Steel Limited.

Even in the face of a tough economy our steel building business has remained strong because our customers recognize the real value offered by our buildings. Customers also know that Classic Steel Limited will support their purchase, year after year.

A developing country like Bangladesh needs professional project development firm more especially pre-fabricated steel building manufacturing company to facilitate industrial and commercial sectors. We observe exiting company in our country has lack of commitment, dedication, honesty, and even don't have any business ethics. Above things to keep in mind Classic Steel Limited started its Journey back in 2007. We are working relentlessly from its inception with firm commitment, technical know-how, and dedication to develop industrial and commercial sectors. Last few years we delivered a good number of praiseworthy pre-fabricated steel building projects on time to our honorable clients.

We believe, each day is a new which comes with new challenges. CSL are always ready to face the challenge by adopting new cutting edge technology, technical know-how and provides tailored solutions for business needs.

Our client is our king. So, we always try to understand our client's demand, analyze the demand in precise manner and try to solve the demand in cost effective way.

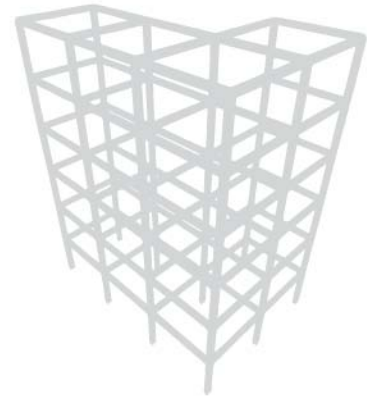
We always get feedback from our stakeholders. Our young, energetic, professional, dedicated and quality conscious executive are waiting to work with you not only to develop your desired project but also to develop a memorable experience which will last long because together build.

**Engr. Md. Saiful Islam**  
Managing Director  
B.Sc Engr (Civil), RUET  
FIEB No: 11827



## ABOUT US

We have full range of steel structure production line and strong technical teams, can design and fabricate for you all kinds of steel structure workshop, warehouse, plant, hanger, commercial and multi storied prefabricated building etc and C purline. Z purline. EPS sandwich panel, corrugated wall and roof sheet etc. Since it's establishment, we adhere to the Committed To Keep Commitment philosophy, has won the trust of our customers. We will adhere to provide you with first-class products & services and development with domestic and foreign customers and work together to create a better future.



### Classic Steel Services

We believe customer's first concern to our customers. What are their needs? Once it is understood, we believe in exceeding our goals through our technical expertise to ensure our customers fully satisfied. We believe that the most successful projects with technical and aesthetic goals are always the product of a "team effort" where customers, management, technical and marketing. Therefore, we pay major emphasis on initial project understanding, Then our IP task is to 'breathe life' into the program and develop an approach which shall satisfy all parties. We have streamlined our progress to deliver the highest quality products in shortest possible time.



### Quality Assurance/Quality Control

Quality management system and quality control of our products as well as engineering services with highest precision is our top most priority to keep ahead of modern market's demands, so that our clients can retain their business relations with us. And your success is our pleasure.



### Safety First

Safety is the major issue to us. Life is not for work, work for life. The personal safety and health of each employee of our organization is of primary importance. We believe that our employees are our most important assets and that their safety at the worksite is our greatest responsibility. The prevention of occupational induced injuries and illness is of such consequence that it will be given precedence over operating productivity whenever necessary. Management will provide all mechanical and physical facilities required for the personal safety and health of each of its employees.



# vision & mission



## VISION

Its vision is to set example in pre-fabricated steel building sector and ultimately become one of the leading pre-fabricated steel building firms of Bangladesh through the utilization innovative manufacturer, services and solution provider in the steel industry.

## MISSION

Its mission is to provide best return of customer's value through cost effective design, quality materials choosing and providing tailored solutions for business needs.

## FIELD OF ACTIVITY

Work in entire pre-engineered steel building product line including design, detailing, fabrication and erection / installation of pre-engineered steel building.





## EXCLUSIVE FEATURES OF STEEL BUILDING

o Flexible design	o Comparative Lowest Cost / Economy
o High Quality	o Wide Span
o Re-Locatable	o Maximum Floor Space
o Quick Delivery	o Design and Architectural Flexibility
o Quick Construction	o Single Source Responsibility

## STRONG FINANCIAL POSITION

We Classic Steel Limited are relentlessly working to develop our country in the sector of pre-fabricated steel building, apartment building and construction sectors. Even we are providing interior & exterior solutions for office space and industry sectors. We already successfully handed over a remarkable number of worthy projects which put up us a good financial backup.

### COMPANY GROWTH



## OUR FAMILY

### CLASSIC POWER & ENGINEERING

The Company Classic Power & Engineering Our aim is to achieve the mission by not only providing quality products but also rendering the excellence in our services. Classic Power & Engineering. core purpose is to foster technological innovations and excellence for the benefit of humanity.

### CLASSIC LANDS & BUILDING TECHNOLOGY LTD.

We pride ourselves to contribute in the socio-economic development of the country by providing apartment, lands and other services at affordable cost. We offer the best apartment, lands and engineering and construction service for our clients. We always offer integrity and professionalism for our clients.

### ROYAL ASIA DEVELOPMENT LTD.

Royal Asia Development Limited is working in the Sector of developing apartment and constructing various projects. Presently it has apartment projects located at Uttara etc

### SANDY BEACH RESORT LTD.

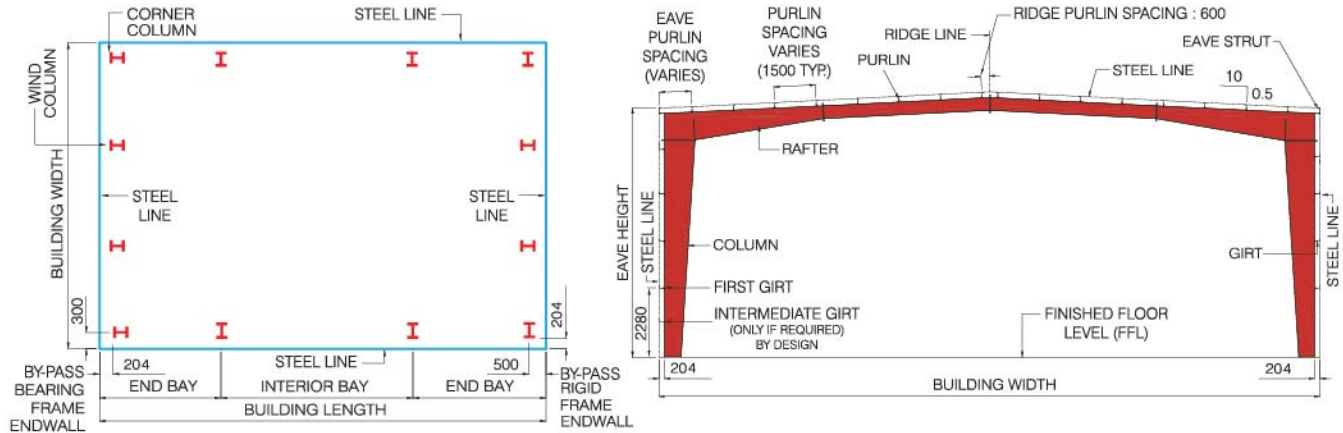
We pride The Sandy Beach Resort is everything you need to find peace. Quick access to the beach. A fantastic restaurant serving some of Cox's Bazar's best and freshest seafood. Private verandahs and gardens for every bungalow and villa. Air-conditioned rooms with huge bathrooms, hot water, and flatscreen TVs.

# features



# BASIC BUILDING PARAMETERS & PRIMARY FRAMING SYSTEMS

The Classic Steel Ltd. Steel Structure of a building comprises of interior rigid frames, endwall bearing (and/or rigid) frames, wind columns, secondary structural number and wind bracing components plus the structural framing of optional subsystems such as roof monitors, mezzanines (inclusive of mezzanine deck and deck fasteners), roof extensions, canopies, fascias, parapets, interior partitions and roof & Wall framed openings, in addition to Structural Sundry Items such as anchor bolts, connection bolts and sag rods,



## Basic Building Parameters

Pre-engineered buildings are defined by the following basic parameters: Building Width, Length, Height, Roof Slope, End Bay Length, Interior Bay length and Design Loads.

### Building Length

Building length is the distance between the outside flanges of endwall columns in opposite endwalls. It is a combination of several bay lengths.

### Building Height

Building height is the eave height, which is usually the distance from the bottom of the main frame column base plate to the top outer point of the eave strut. When columns are recessed or elevated from the finished floor, eave height is the distance from the finished floor level to the top of the eave strut.

### Building Width

No matter what primary framing system is used, the building width is defined as the distance from outside of eave strut of one sidewall to outside of eave strut of the opposite sidewall.

### Roof Slope (x/10)

This is the angle of the roof with respect to the horizontal. The most common roof slopes should not be less than 0.5/10. Any practical roof slope is possible.

### End Bay Length

This is the distance from the outside of the outer flange of endwall columns to the center line of the first interior frame column.

### Interior Bay Length

This is the distance between the center lines of two adjacent interior main frame columns. The most common bay lengths are 6,7,5 and meters. Any bay length is possible up to 10 meters.

### Design Loads

Unless otherwise specified, ZSI's Pre-Engineered Building are designed for the following minimum loads:

### Roof Live Load: 0.57 kN/m<sup>2</sup>

Design parameters of snow loads, earthquake loads, collateral loads, crane loads or any other loading condition must be specified when requesting a quotation.

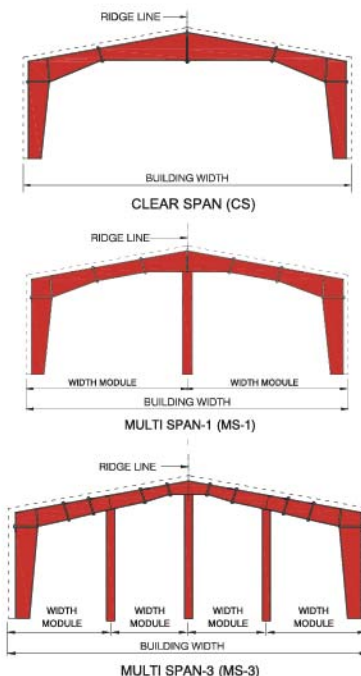
Load are applied in accordance with American codes and standards applicable to pre-engineered buildings unless otherwise requested of the time of quotation.

For more detailed information, please refer to the Classic Steel Technical Manual for Pre-Engineered Buildings.

## PRIMARY FRAMING SYSTEMS

Classic Steel Ltd. pre-engineered Building are constructed using a variety of framing systems. The diagrams on this page illustrate those most commonly employed. They are symmetrical at the ridge line.

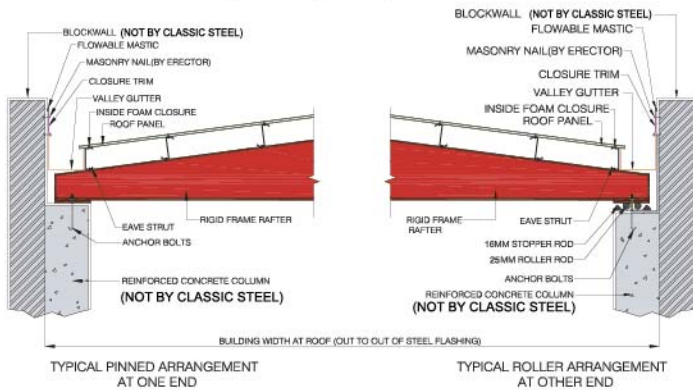
Asymmetrical and non-equal multi-span Framing Systems are also available. Please consult with your Classic Steel Ltd. representative nearest to you about your specific project requirements.



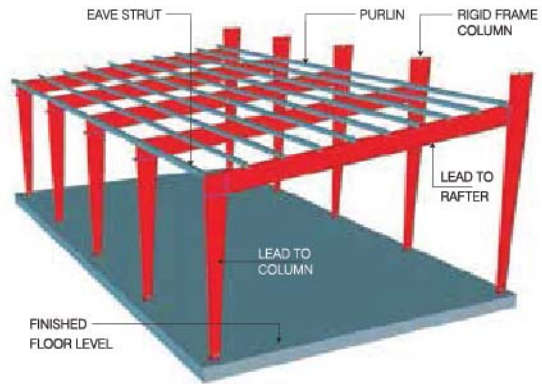


# STRUCTURAL SUBSYSTEMS & ROOF SYSTEMS OF BUILDING

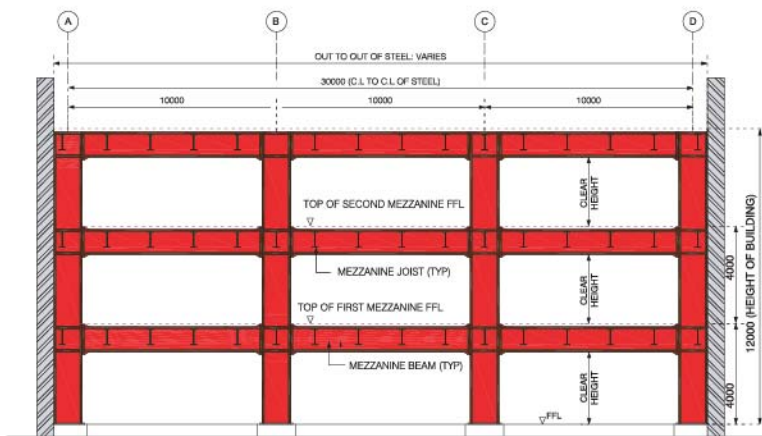
A Roof System consists of roof rafters, purlins and roof sheeting that is specifically designed to install onto a new or existing substructure. The substructure is normally made of concrete or masonry, Wherever the terms "building width" or "building length" are used by us, they refer to the structural system supplied by Classic Steel Ltd. and not to the substructure.



CROSS SECTION OF INTERIOR RIGID FRAME RAFTER

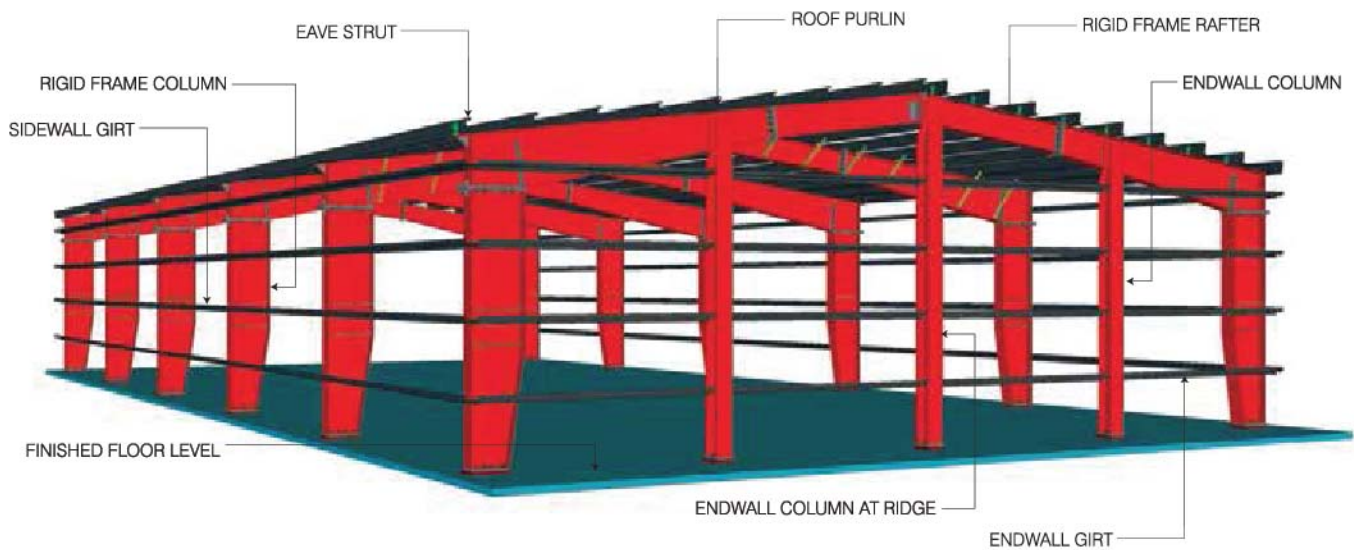


LEAN-TO FRAME PROFILE



CROSS SECTION OF A FLAT ROOF LOW RISE BUILDING WITH TWO INTERMEDIATE FLOORS

Low rise buildings ( Ground + two Intermediate floors+roof) are ideal for offices and other commercial uses. Low rise buildings, utilizing the CSL approach, are not only more economical than traditional methods of construction but are often constructed in half the "normal" time especially when complemented with other fast track subsystems.



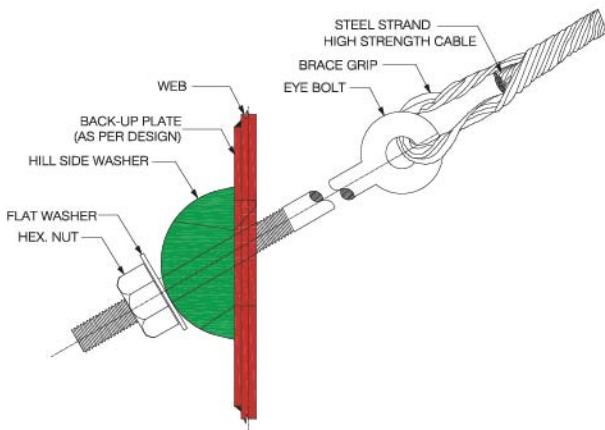
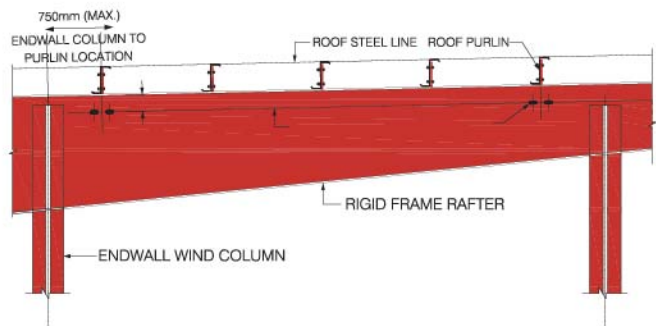
RIGID FRAME ENDWALLS WITH FLUSH GIRTS : ELEVATION

# BRACING SYSTEMS

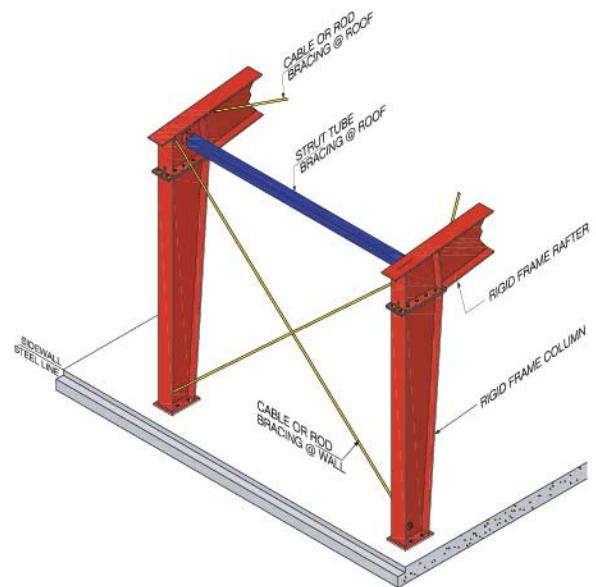
The main purpose of a bracing system is the transmission of lateral forces due to wind, cranes, earthquakes, etc. from their point of application on the structure to the column bases and eventually into the foundations. Bracing systems (in both roof and walls) are furnished along the length of buildings to provide longitudinal stability due to the weakness of building structures in that direction. The lateral stability of Classic Steel Ltd. is achieved by frame action (designing the rigid frames to resist the imposed lateral loads). In general, every sixth bay of a bay of a Classic Steel Ltd. should be braced, though this may vary depending on the wind speed and the building parameters. The Multi span (MS) building below is shown with diagonal bracing between interior columns, which is a common practice in wide MS building unless requested to be removed by customer.

Location of diagonal roof bracing in a typical roof rafter. Diagonal roof braces are located between wind purlins. The concentrated wind forces at the top of endwall wind columns (at the roof line) travel along the purlins closest to the wind columns. These forces are dissipated equally by the diagonal bracing of all braced bays (because of the diaphragm action of the metal roof panels) and travel through the diagonal bracing on each side of the ridge down to the eave strut and eventually through the diagonal wall bracing down to the column bases and foundations.

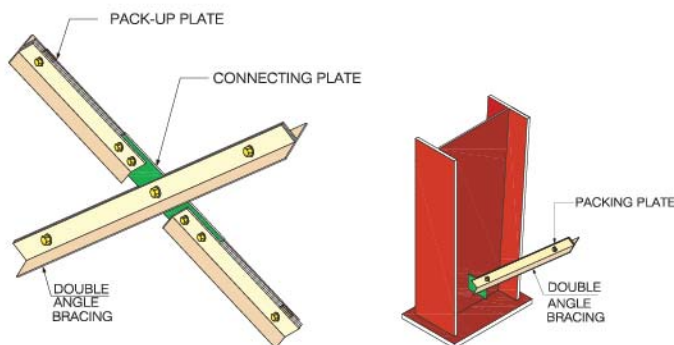
**DIAGONAL BRACING (CABLE, ROD OR ANGLE):** Diagonal bracing in Classic Steel Ltd. is designed to carry tensile loads only. Depending on the direction of wind forces, only one of the two diagonals carry tensile loads at any one time. Classic Steel's standard longitudinal bracing system is made of diagonal galvanized cables in both roof and walls. Rods have the same tensile capacity as cable and are only used when specified. Angles are used when wind forces exceed the load capacity of cables.



CABLE BRACING COMPONENTS



CABLE OR ROD BRACING AT SIDEWALL



ANGLE BRACING CONNECTION DETAILS



SUNDRY ITEMS



# BUILDING ACCESSORIES & TERMINOLOGY

Flashing and trims are sheet metal closures designed primarily to provide weather tightness and neat appearance at corners and junctions. The name flashing and trims are used synonymously.

Noting enhances the overall appearance of a pre engineered steel building more than the correct and appropriate trim. The appearance of standard accessories (such as ridge ventilators, windows, personnel doors, sand trap louvers, roll-up doors, sliding doors, framed openings, etc.)

and structural additions (such as partitions, fascias, canopies, roof extensions and parapets) is greatly enhanced with flashing and trims. The most common trims are eave trim, gable trim and corner trim.

Classic Steel's roof trims and flashing are produced from the exact same material as the wall panels.

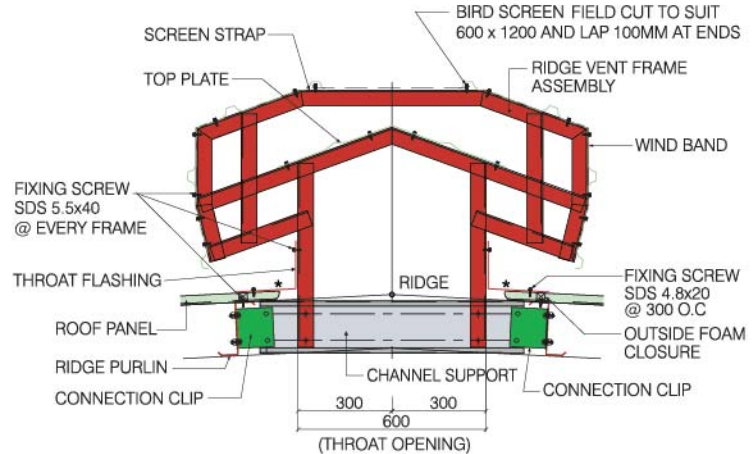
Although Classic Steel Ltd. has several standard trims & flashings, any type of flashing trim can be produced, giving Architects the opportunity to develop elegant details to suit and desired application.



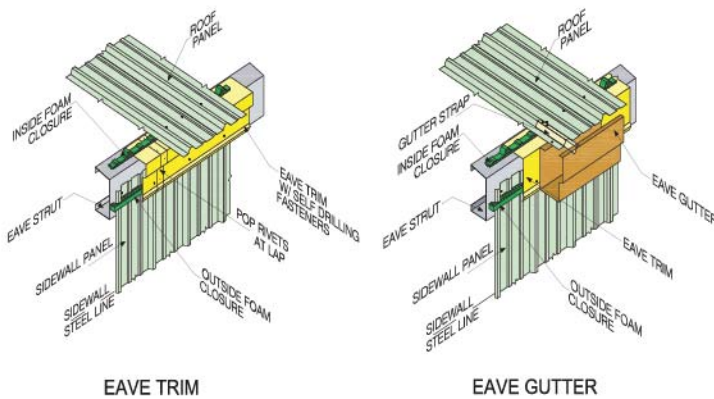
SUNLIGHT TRANSLUCENT SHEET



DOUBLE BUBBLE INSULATION



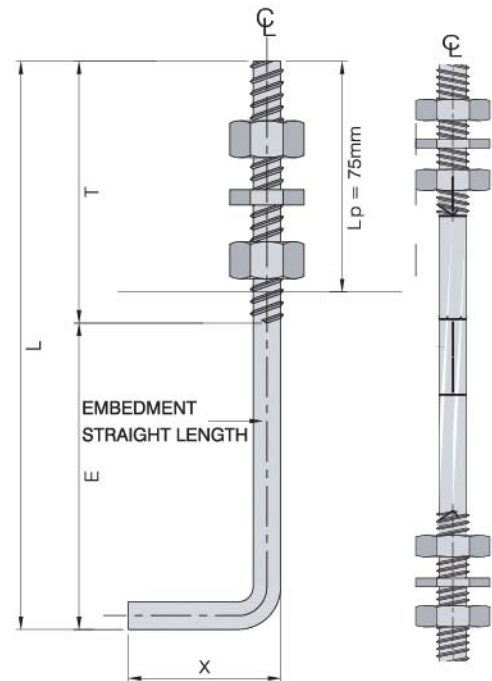
CROSS SECTION OF 600 MM RIDGE VENTILATOR



EAVE TRIM

EAVE GUTTER

Anchor Bolts are produced from either A36 (Grade 4.6) or a 449 (Grade 8.8) steel bars. Classic Steel anchor bolts are hot dip galvanized and come pre assembled with 2 nuts and a washer. Unless grouting is required under the base plates, the 2nd nut is not required and can be discarded at site.



ANCHOR BOLT



# CRANE SYSTEMS

The most common type of overhead crane in CSL is the overhead Top Running Crane. Buildings with Top running Cranes are normally supplied with column crane capacities are high or if specified by a Customer.

Buildings with Underhung Cranes are supplied with crane runway beams, rafter brackets, lateral kickler angles and vertical bracings. Buildings with Monorail Cranes are supplied with rafter brackets, The monorail beam is normally designed and supplied by the monorail supplier.

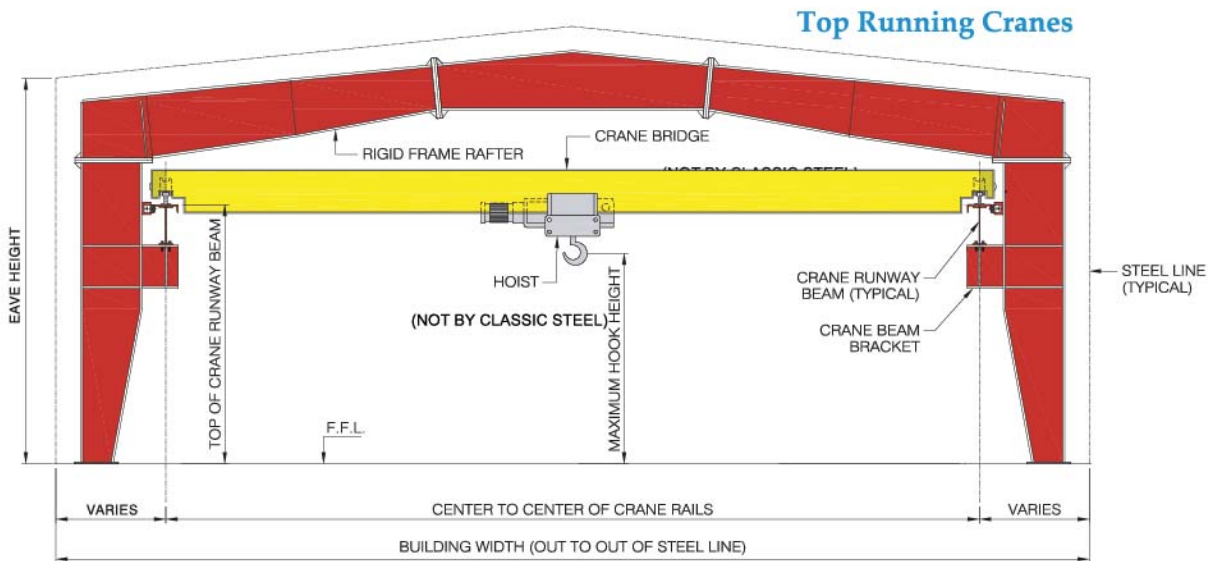
Buildings with Jib Cranes are supplied with cap channels (welded to column flange) and bracings.

Crane rails are excluded from our supply.

In order for us to provide most economical design for crane runway beams and for the supporting building elements, the

**Customer must provide us with the following crane data:**

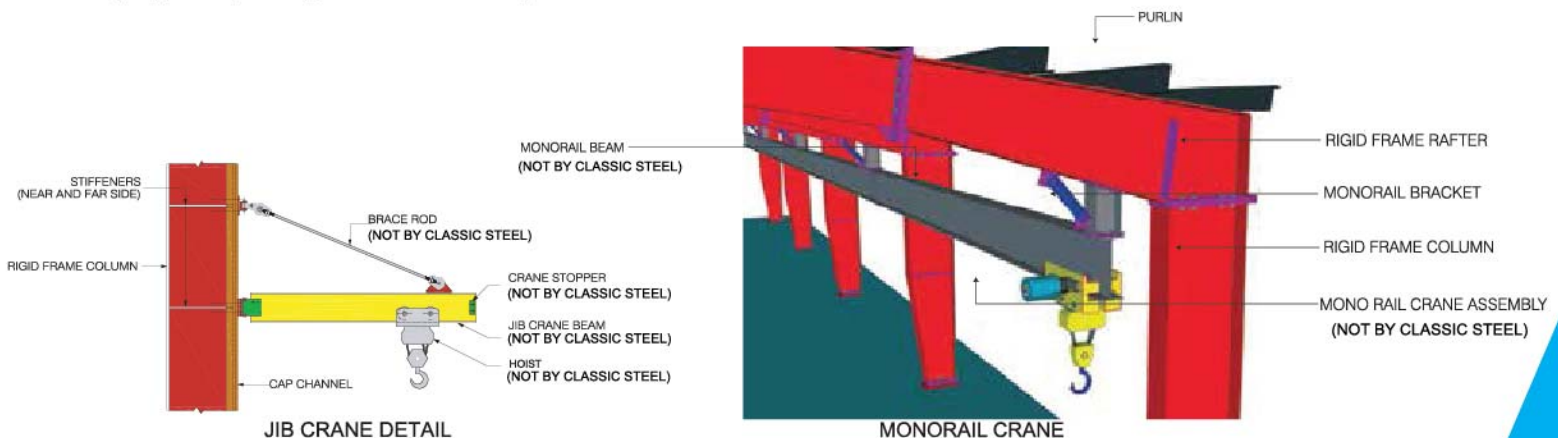
- ♦ Location of cranes in the buildings
- ♦ Travel length of cranes
- ♦ C.L. to C.L. distance of crane rails
- ♦ Crane hook height
- ♦ Static Wheel loads
- ♦ Vertical and horizontal clearances
- ♦ Wheel base & bumper distances of end carriages
- ♦ Type of crane operations (cab or pendant)
- ♦ Type of crane duty cycle (full capacity lifts per hour)
- ♦ No. Of cranes operating in a single bay.



RUNWAY BEAMS ARE SUPPORTED ON BRACKETS THAT ARE WELDED TO RIGID FRAME COLUMNS

## MONORAIL BEAMS

These are the cheapest form of overhead cranes. Their limitation is that their hoists carry loads in one direction only. The monorail beam is normally supplied by the supplier of the Monorail system.





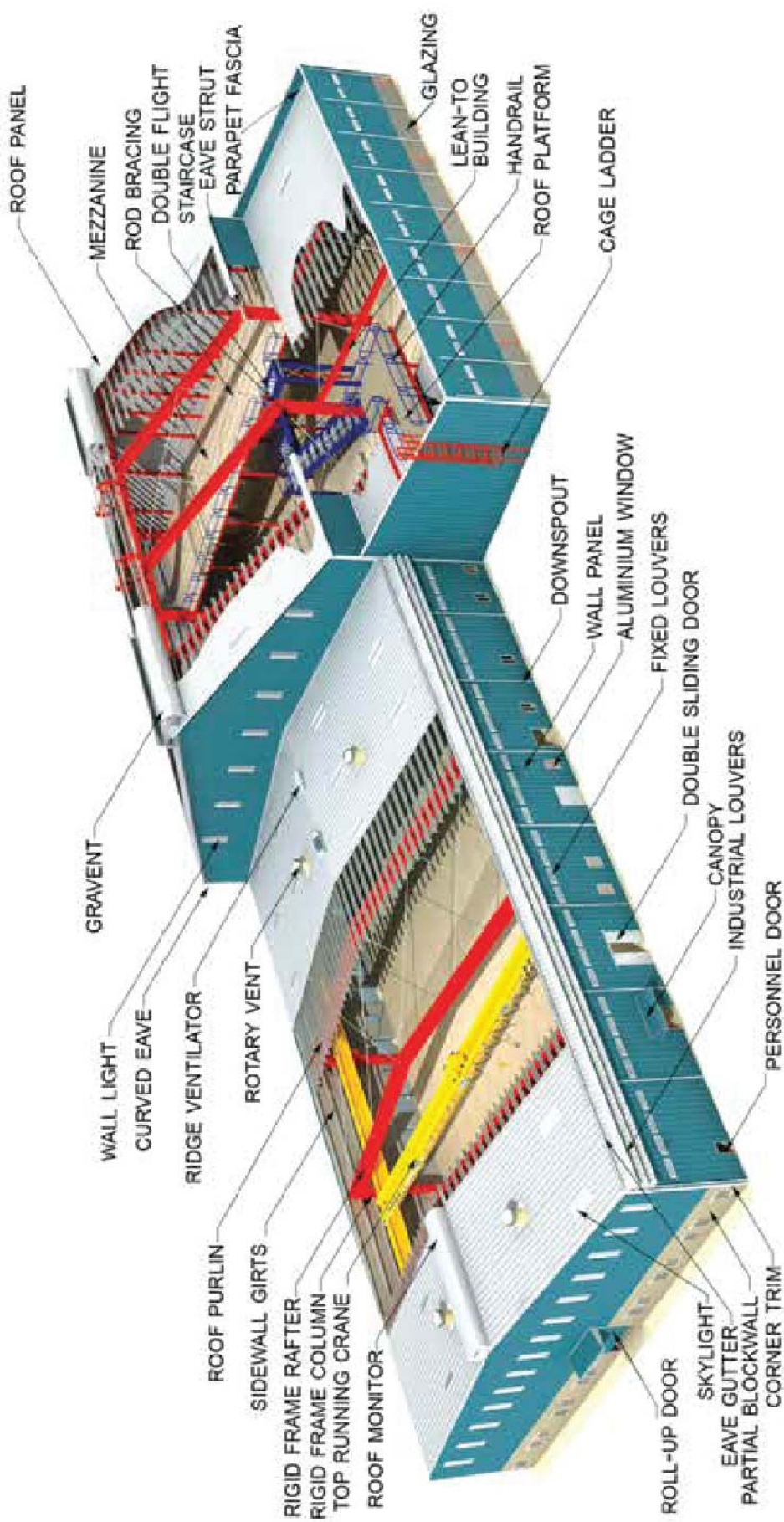
## ZINC-ALUM COLOUR BOND



Classic Steel Limited (Fabrication factory), Sutipara, Nannar Road, Dhamrai, Dhaka-1351



# The Pre-Engineered Steel Building System





## SOME OUR VALUEABLE CLIENT & PROJECTS



NJC Ceramic Bangladesh Limited, Workshop Building, Dhamrai, Dhaka (14270 Sft)



ACI Healthcare Ltd, Sonargoan, Narayangonj ( 22273 Sft.)



AGS Pharma & Medical Devices Ltd. Gopalganj ( 78400 Sft.)



Alliance Leather Goods & Footwear Ltd, Badda Dhaka, (17400 Sft.)



Fair Knitwares Ltd. Gazipur (33000 Sft.)



Kabid Elector Venture, Karanigonj Bacic, Dhaka (6000 Sft.)



Farmland Green Auto Bricks Ltd. Mirzapur, Sherpur, Bogura (125000 Sft.)



Makrail Green Auto Bricks Ltd. Modhukhali, Faridpur (12500 Sft)



## SOME OUR VALUEABLE CLIENT & PROJECTS



Azizu Trading (Warehouse), Narayangonj (16530 Sft)



BAF Mini Hanger, Jessore Airport (24 nos, 50000 Sft.)



Grain Plus Pharmaceuticals, Pabna (3030 Sft.)



Mim Dresses Ltd, Mazukhan, Tongi, Gazipur (42000 Sft.)



Multazima Denim Project, Valuka, Mymensingh (105000 Sft)



Mutual Foam & Tableware Ltd, Shafipur, Gazipur (35000 Sft.)



Rajshahi Auto Bircks Ltd, Nawahata (47000 Sft.)



Rustom Textiles Limited, Valuka, Maymensingh (65465 sft)



## SOME OUR VALUEABLE CLIENT & PROJECTS



National Polymer Industries Ltd. Tongi, Gazipur (68500 Sft)



S.S Feed Industries Ltd , Tebaria, Natore (40000 Sft)



Jabusa Auto Rice Mills Limited, Rupsha, Khulna (12000 Sft.)



C & R Sweater Limited, Zoinabazar, Sreepur, Gazipur (97000 Sft.)



Mutual Fhome & Tablewear Industries Ltd. Safipur, Gazipur (30000 Sft.)



Fancy Fabrics Ltd, Sutipara, Dhamrai, Dhaka, ( 25350 Sft)



Pivot Engineering Limimtet, Kalma, Ashulia, Dhaka (4200 Sft.)



Patriot Spinning Mills Limited, Valuka, Mymensingh (40600 Sft.)



## SOME OUR VALUEABLE CLIENT & PROJECTS



National Polymer Industries Ltd, Tongi, Gazipur (68500 Sft)



Fair knitwears Ltd, Sharifpur, Malekerbari, Gazipur (33000 Sft)



Fast Food Limited, Pabna (11000 Sft)



Islam Group (ABFL Ware House), Ramdi, Kisorgonj (14000 sft)



Multazim Spinning Mills Ltd. Valuka, Mymenshingh (50000 Sft)



Anik Poly Industries Ltd. Gazipur. (18000 sft)



Patriot Spinning Mills Ltd. Valuka, Mymenshingh (48000 Sft)



Poly Bag Factory Maynertake, Uttarkhan, Dhaka (16000 Sft)



## SOME OUR VALUABLE CLIENT & PROJECTS



A S F Fiber Mills Ltd. Valuka, Mymensingh (50000 Sft)



AGS Pharma & Medical Device Ltd, Gopalgong (78400 Sft)



ACI Limited (Utility Bridge BBT-1 & 2), Naryangonj (1245 Rft)



Lubnan Trade Consortium Ltd, House Building, Uttara-7, Dhaka (8800 Sft)



Maa Sanitary Mart (Sweater Factory), Maynertake, Dhaka (16200 Sft)



Ms Faruk Textile, Betail, Sirajgonj (10000 Sft)



Multazim Godown ,Valuka, Mymensingh(10000 Sft)



Padma Tank, Rajendropur, Gazipur. (10000 Sft)



## SOME OUR VALUEABLE CLIENT & PROJECTS



Multazim Spinning (Wastage Godown), Valuka, Mymensingh (30000 Sft)



Bengal Biscuits Limited, BSCIC Industrial Estate, Borisal (13727 Sft)



S.B Labrotories Ltd , Amchattar, Rajshahi (10203 Sft)



Sikander & Sons (Home Vision), Washpur, Bosila, Dhaka (17430 Sft)



AB Feed Mills Ltd, Natiapara, Tangail, ( 18647 Sft.)



NDC Auto Bricks Ltd. (Magura Group), Magura (65000 Sft)



Rooppur Nuclear Power Plant (Training Center), Pabna (14800 Sft)



Saiham Suits Ltd /Knit & Composite Ltd. Noyapara, Hobigong- (17319 Sft)



## SOME OUR VALUABLE CLIENT & PROJECTS



Young Genius BD Ltd. Somorsing, Pubail, Gazipur (15500Sft)



Roar Fashion Ltd, Vhaluka, Mymensingh (15000Sft)



Dutch Dairy Limited (ABA Group), Munsigong (11083 Sft)



Victory Footwear Industry Ltd, Khagan, Birulia, Savar, Dhaka (24200 Sft)



Flashy Flash Jute Mills Ltd, Dighapotia, Natore (860000 Sft)



Flashy Flash Jute Mills Ltd, Dighapotia, Natore (860000 Sft)



Moho Plastic Factory, Meril Road, Pabna (5632 Sft)



Tex World Knitwear Ltd, Sutipara, Dhamrai, Dhaka (35244 Sft)



## OUR CLIENTS

We work with some of organisations . Regardless of whether you are an ambitious startup or an established brand, we can help





# TEST REPORT



Centre for Advisory and Testing Services (CATS-MIST)  
Military Institute of Science and Technology

### TENSION TEST OF STEEL PLATES (ASTM A370)

CLIENT: CLASSIC STEEL LTD.  
PROJECT: CLASSIC STEEL LTD., ONE STOREY PRE-FABRICATED STEEL 2.0 BUILDING (PRODUCTION SHED), GAZIPUR (TANGAIKARHARA ROAD), GA. JGA, MHA/PPH/167-17/18

NO.	REMARKS	TEST NO.	YIELD STRENGTH (MPa)	TENSILE STRENGTH (MPa)	ELONGATION (%)	REMARKS
1		4.8	348.5	432	20	
2		4.86	32.9	427	20	
3		4.8	348.5	432	20	
4		4.8	348.5	432	20	
5		4.8	348.5	432	20	
6		4.8	348.5	432	20	
7		4.8	348.5	432	20	
8		4.8	348.5	432	20	
9		4.8	348.5	432	20	
10		4.8	348.5	432	20	

NO.	REMARKS	TEST NO.	YIELD STRENGTH (MPa)	TENSILE STRENGTH (MPa)	ELONGATION (%)	REMARKS
11		4.8	348.5	432	20	
12		4.8	348.5	432	20	
13		4.8	348.5	432	20	
14		4.8	348.5	432	20	
15		4.8	348.5	432	20	
16		4.8	348.5	432	20	
17		4.8	348.5	432	20	
18		4.8	348.5	432	20	
19		4.8	348.5	432	20	
20		4.8	348.5	432	20	

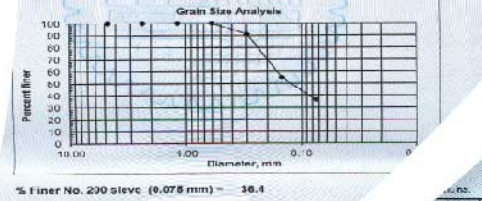
Authenticity of this page is verifiable from <http://verify.ca.buet.ac.bd> with the QR Code or ID with the QR Code or ID

BUET UNIVERSITY OF ENGINEERING AND TECHNOLOGY (BUET)  
DEPARTMENT OF CIVIL ENGINEERING  
GEOTECHNICAL ENGINEERING LABORATORY

110-L-1903/CE/2017-8, Dated: 16/07-2017  
Md. Nazmul Haque, General Manager, Classic Steel Limited  
Location: Mirpur

### WASH SIEVE ANALYSIS

Sieve No.	Sieve opening (mm)	Weight retained (g)	Percent retained	Percent passing
4	4.750	0	0	100
8	2.360	0	0	100
16	1.180	0	0	100
30	0.600	0	0	100
60	0.250	0	0	100
100	0.150	36.30	36.3	63.7
200	0.075	18.63	18.63	81.37
Pass		36.40		



% finer No. 200 sieve (0.075 mm) = 63.7

Actual	Actual	Actual	Average	Yield or	Yield or	Average	Ultimate	Ult
Plate	Plate	Area	Unit	Proof	Proof	Yield or	Load	Str
Width	Thickness	Under	Weight	Load	Strength	Proof		
10.1	534.00		18049	3380		24933		
9.4	531.00		20802	3920		25411		
10.0	534.00		17131	3240		23861		

Authenticity of this page is verifiable from <http://verify.ca.buet.ac.bd> with the QR Code or ID

## TEST REPORT CERTIFICATE

DEPARTMENT OF CIVIL ENGINEERING  
STRENGTH OF MATERIALS LABORATORY

### TENSION TEST RESULTS

Bolt	Nut	Mark	Bolt Shank Dia	Net Bolt Dia	Breaking load	Breaking Stress (based on nominal area)	Mode of Failure
			mm	mm	kN	MPa	
S	S		24.4	20.3	197	400	Through Bolt
S	S		24.4	20.3	197	400	Through Bolt
S	S		24.4	20.3	191	390	Through Bolt

### TENSION TEST RESULTS

Nut	Mark	Bolt Shank Dia	Net Bolt Dia	Breaking load
		mm	mm	kN
S		24.4	20.3	197
S		24.4	20.3	197
S		24.4	20.3	191

Authenticity of this page is verifiable from <http://verify.ca.buet.ac.bd> with the QR Code or ID

DEPARTMENT OF CIVIL ENGINEERING  
STRENGTH OF MATERIALS LABORATORY

### TENSION TEST RESULTS

Actual	Actual	Actual	Average	Yield or	Yield or	Average	Ultimate	Ult
Plate	Plate	Area	Unit	Proof	Proof	Yield or	Load	Str
Width	Thickness	Under	Weight	Load	Strength	Proof		
10.1	534.00		18049	3380		24933		
9.4	531.00		20802	3920		25411		
10.0	534.00		17131	3240		23861		

Authenticity of this page is verifiable from <http://verify.ca.buet.ac.bd> with the QR Code or ID



## OUR HONORABLE CLIENT LIST

Sl. No.	Project	Area (Sft.)	Location	Sl. No.	Project	Area (Sft.)	Location
1	Ema Accessories Ltd. (Poly Bag Factory)	20,000.00	Turag,Tongi, Gazipur	52	Sareng Agro Food Ltd	18000	Jhalokathi
2	M/S Mridha Enterprise (Warehouse)	68,500.00	Hemayatpur, Savar, Dhaka	53	Patriot Spinning Unit-2	74000	Valuka
3	Speedwell CNG (C.N.G station)	3000	Tongi, Gazipur	54	BAF Hanger (24 Nos. Hanger)	50000	Jessore Air Force
4	Bangladesh Baptist Charge Farmgate (Prayer House)	3,000.00	Farmgate, Dhaka	55	A R Khan Group	16000	Narshiondi
5	Dhaka Credit, Farmgate (5th Floor)	5,000.00	Framget Dhaka.	56	Lenny Fashion	3000	EPZ, Dhaka
6	Kabid Electro Venture (Two Storied Sub Station Factory)	6000	Karanigonj, Dhaka	57	Rustom Textiles Limited	65465	Valuka, Mymensingh.
7	M/S Faruk Textile	10, 000.00	Betil Sirajgonj.	58	Mega Washing (6 Storied)	102000	Hotapara, Gazipur
8	Vertex	2000	Savar, Dhaka	59	Naz Auto Bricks Ltd	138000	Rangpur
9	Padma Tank	10,000.00	Salna, Gazipur	60	Farmland Auto Bricks Ltd.	97854	Gorta, Sherpur, Bogra
10	Habib Beg Rubber Industries	5000	Rajendropur,Gazipur	61	Makrail Auto Green Bricks Ltd	5000	Modhukhali, Faridpur
11	Rejency Knitwear Limited	7500	Muchak,Gazipur	62	Fair Knitwear Ltd (3 Storied Building)	33000	Malekerbari, Gazipur
12	Patriot Spinning Mills Limited ( Civil & Steel)	40,600.00	Valuka,Mymensingh	63	Poly Bag Factory	16000	Uttarkhan, Dhaka
13	ASF Fiber Mills Limited (Spinning Mill)	50,000.00	Valuka,Mymensingh	64	ACI Healthcare Ltd.	65000	Sonargoan, Narayangong
14	Design & Printing Accessories Ltd. (Poly Bag Factory)	5000	Konabari,Gazipur	65	National Polymer Industries Ltd	68000	Tongi, Gazipur
15	Multazim Spinning Mills Ltd	12000	Sirajgonj	66	NDC Auto Bricks Ltd. (Magura Group)	65000	Ramnagar, Magura.
16	Multazim Spinning Mills Ltd.(Rotor Spinning)	40000	Valuka, Mymensingh.	67	Sonali Fiber (pvt) Limited	3000	Haybathnagar, Kisorgong
17	Mutual Table Wear Ltd	30000	Shafipur,Gazipur	68	Lubnan Trade Consortium (Infinty Megamall)	5000	House Building, Uttara, Dhaka
18	Johura Textile Mills Ltd	29200	Konabari,Gazipur	69	Fancy Fabrics Ltd	25350	Sutpara, Dhamrai, Dhaka
19	Reliance Vegetable Mills Ltd.	16000	Mymensingh	70	NJC Ceramics BD Ltd	20000	Bathuli, Dhamrai, Dhaka
20	Multazim Spinning (Wastage Godown)	12000	Valuka,Mymensingh	71	Roar Fashions Ltd.	5000	Valuka,Mymensingh
21	Radiant Medical Device co. Ltd.(Two Stored)	24888	Jessore	72	Sky Unlimited (S.A Paribahan)	2000	Lalmatia, Dhaka
22	Galaxy Bangladesh (Ten Storied)	3000	Gulshan, Dhaka	73	Jabusa Auto Rice Mills Ltd	12000+6000	Rupsha, Khulna
23	CRC Textile	11500	Mawna, Gazipur.	74	C & R sweater Ltd (Civil & Steel part)	85614	Jaina Bazar, Gazipur
24	Azizu Trading (Warehouse)	16530	Narayangong	75	S.S Feed Industries Ltd (SS Agro Trade Link)	40000	Tebaria, Natore
25	Grainplus Pharmaceuticals	3030	Pabna	76	S.K Emporium (Pvt.) Ltd	4140	Badarpur, Narsingdi
26	Patriot Finished Godown	4320	Valuka,Mymensingh	77	RAJUK utara challenger lifcore	700	RAJUK , Uttara
27	Alliance Leather Goods & Footwear Ltd (Two Storied)	17608	Berayed,Badda	78	Boishaki Monch Curve Shed( City Corporation)	4520	Circuit House, Mymensingh
28	Gorashal Container Limited	6000	Gorashal,Norshindi	79	Deffence Global Spinning Mills Ltd	75576	Shialcoal, Sirajgong
29	Mir Akter Hossain Ltd. Lift	850	Core Gulshan-2	80	Advanced Chemical Industries Ltd (ACI Ltd)	1285	Godhrai, Hajtag, Narayangong
30	Penta Group	6100	Singaer,Manikgonj	81	S.B Labrotories Ltd (Shed & Mzn. Floor)	10203	Amchattar, Rajshahi
31	N Akter & Associates	2000	EPZ Dhaka	82	AFCO Abedin Garments Ltd	23624	Uttarkahan, Dhaka
32	AGS Pharma & Medical Devices Ltd (4 storied)	18496	Kashiani, Gopalgonj	83	Maysha Knitwears Ltd	12000	Hotapara, Gazipur
33	ATV LTD.	3048	Chairmanbari,Dhaka	84	Oriental Jute Mills Ltd (Shed Bid.)	121000	Chatar, Boalmari, Faridpur
34	Rajshahi Auto Bricks Limited	12000	Nowhata,Rajshahi	85	AB Feed Mills Ltd (Factory Shed+Tower)	13670+4977	Nalipara, Tangail
35	MIM Dresses Limited	2000	Mazukhan Tongi	86	Bengal Tex (Export Garments Oriented Accessories)	8265	Shoddingarij, Narayangong
36	Iso Tech Chemical Industries Ltd	3854	Ghatail Tangle	87	Saiham Suits Ltd (Warehouse & Canteen Building)	13046+4273	Noyapara, Hobigong
37	Rajshahi Auto Bricks Limited	5000	Nowhata,Rajshahi	88	Moho Plastic Factory	5632	Meril Road, Pabna
38	Bangabandhu Safari Park (Hanging Bridge)	1600	Bridge Gazipur	89	Pabna Sugar Mills Ltd (Renovation work)	3200	Dasunia, Ishwardi, Pabna
39	Daudpur Agro Limited	11000	Feni	90	Roar Fashion Ltd (Civil & Steel Work)	15000	Polly Biddut, Bhaluka.
40	Aftab Hatchery Northern Ltd(Islam Group )	1700	Tetulia, Panchagor	91	Flashy Flash Jute Mills Ltd	86000	Dighapotia,Natore
41	Multazin Denim Project	104000	Valuka, Mymensingh.	92	Sayed Machinerries Limited	14200	Kanaipur, Faridpur
42	Lithun Fabrics	22885	Borpa,N Gonj	93	Sristi Real Estate Limited (Car Parking Shed)	2000	Shahinpur, Mirpur-1
43	BAF Mini Hanger	15000	Chittagong	94	Rooppur Nuclear Power Plant -Roder Site Steel structure	14800	Rooppur, Ishwardi, Pabna
44	Patriot Spinning Raw Cotton Godown	12000	Valuka,Mymensingh	95	Sikander & Sons (Home Vision)	17430	Washpur, Bosila, Dhaka
45	Fast Food Ltd	1000	Pabna	96	Victory Footwear Industry Ltd	24200	Khagan, Birula, Savar, Dhaka
46	Anik Poly & Packaging Industries Ltd	18000	Gazipur	97	Universal Food Limited (2 Storied warehouse)	13500	Banglabazar, Pabna
47	Islam Group warehouse	13300	Kisorgonj	98	Bengal Biscuits Limited	13727	BSCIC , Barisal
48	L Bangla	2000	Narsingdi	99	Dutch Dairy Limited (ABA Group)	11083	Lohagong, Munsigong
49	United Power Plant Brize	450	Asugonj	100	Young Genius BD Ltd (Civil & Steel)	15500	Mirerbazar, Gazipur
50	Sareng Agro Food Ltd	18000	Jhalokathi	101	Tex World Knitwear Ltd	35244	Sutpara, Dhamrai, Dhaka
51	Patriot Spinning Unit-2	74000	Valuka	102	MSSS Feed Mills Ltd	35245	Valuka, Mymensingh
				103	Colours Collection (warehouse)	5032	Eastern Housing, Dhaka





Factory of Classic Steel Ltd.

### SISTER CONCERN OF CSL

- Classic Power & Engineering
- Royal Asia Development Ltd.
- Classic Lands & Building Technology Ltd.
- Sandy Beach Resort Ltd.
- Delta Cargo & Logistics Ltd.

# CSL Classic Steel Limited

A Complete Solution of Pre-Fabricated Steel Building

**Corporate Office**  
 House : 403 (2nd Floor), Road : 29  
 Mohakhali DOHS, Kafrul,  
 Dhaka-1206, Bangladesh

Branch Office: House-2(GF), Road-9, Sector-4, Uttara, Dhaka-1230  
 Factory: Sutipara (Nannar Road) Kalampur, Dhamrai, Dhaka-1351

📞 : + 88 0255058481, + 88 0255058482  
 📞 : + 88 01713 412534, 01616 007070  
 ✉ : classicsteelbd@gmail.com  
 📘 : Classic Steel Limited  
 🌐 : www.classicsteelltd.com